

Access: Avg Function

In Access, the **Avg** function returns the average (arithmetic mean) of a set of numeric values in a select query.

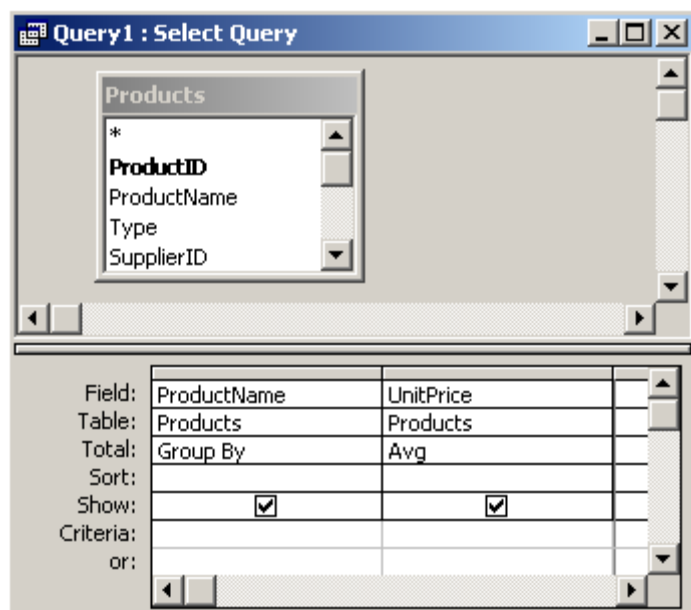
The syntax for the **Avg** function is:

Avg (expression)

expression is a numeric value. It can be a field or a formula that evaluates to a numeric expression.

SQL/Queries

You can use the **Avg** function in a query by clicking on the Totals button in the toolbar (This is the button with the summation symbol). The **Avg** function is used in conjunction with the **Group By** clause.



This query would return the average UnitPrice by ProductName.